

Clinical Introduction

Clinical Introduction to the EZsurgical A-Lap™ Retractor

Introduction

A key factor in safe and effective laparoscopic surgery is the surgeon's ability to conveniently view the working area and create a good surgical window in a consistent, controlled manner.

The A-Lap™ is the first 3-Dimensional laparoscopic retractor. The device features include a **soft and compliant mesh** controlled by an intuitive handle design allowing the surgeon to manipulate and lock-in the degree to which the device is opened. A-Lap™ design enables conveniently “wrapping” a large volume of tissue, by accepting the natural topography of the organ, thus simplifying soft tissue retraction and reducing ‘slippage’ of tissue during retraction.

The A-Lap™ 3-Dimensional design allows optimal soft-tissue retraction for general surgery, gynecologic and urologic procedures.

A-Lap™ set is packaged with a dedicated flexible port, which can be used with any 5-6mm laparoscopic tool.



Fig 1: A-Lap 3-D configuration and Flexible port

Clinical Examples

The A-Lap™ may be used to retract the Liver and Gallbladder, creating a surgical window in the upper right quadrant.

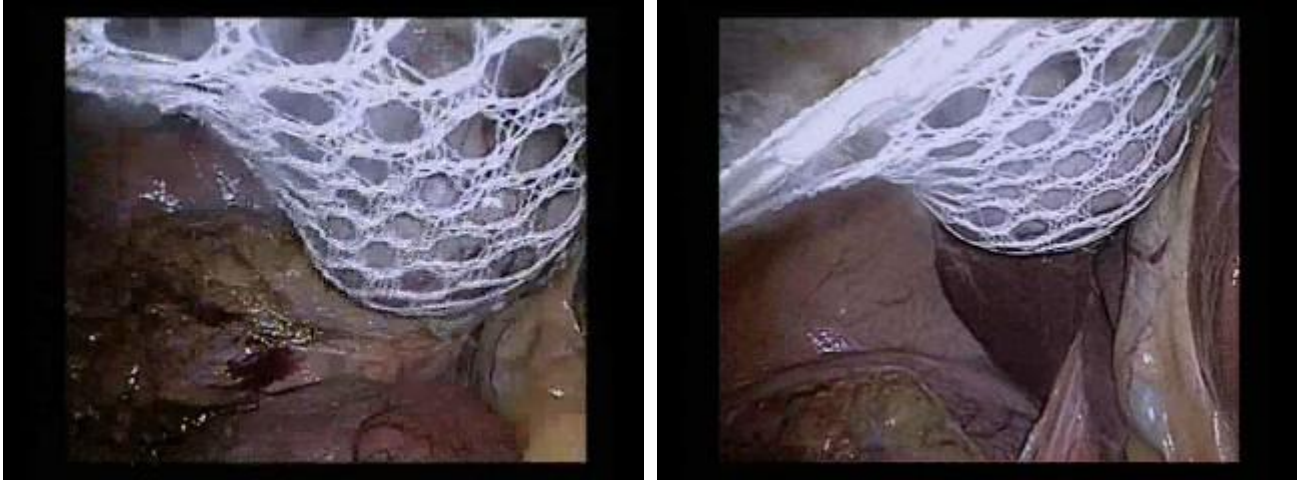


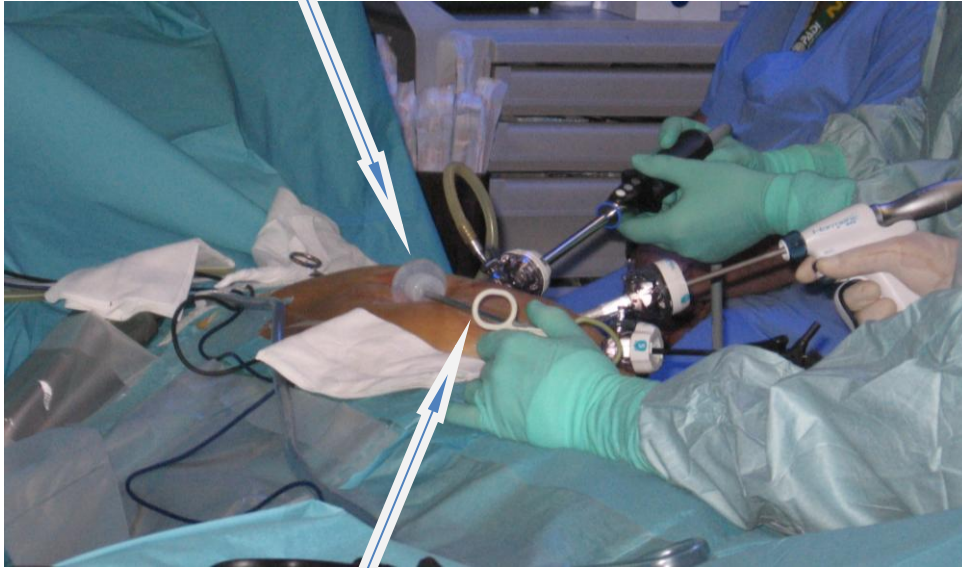
Fig 2: A-Lap compliant Mesh shown retracting the Gallbladder and Liver. The mesh conforms to the 3-D topography of the organ.

In Fig. 3 the A-Lap™ is shown during approach to retract the Gallbladder and Liver. The device compliance is clearly presented, as it conforms to organ anatomy. Approach was from a flexible port in the right supra-umbilical area, as shown in Fig. 4.



Fig 3: A-Lap in approach to retract Gallbladder and Liver.

Flexible Port



A-Lap Handle

Fig 4: A-Lap during Laparoscopic Rt. Hemicolectomy

The A-Lap™ may be used to retract the small bowel, as shown in Fig. 5. Small bowel retraction can be performed from an entry point of the surgeon's discretion, depending on the procedure and the desired location for the surgical window.



Fig 5: A-Lap retracting small bowel and creating wide surgical window

In the following photo set of Fig. 6 retraction of small bowel is demonstrated. This case exemplifies small bowel retraction during Lt. Hemicolectomy, from an incision in the Infra-umbilical area, as shown in Fig. 7.

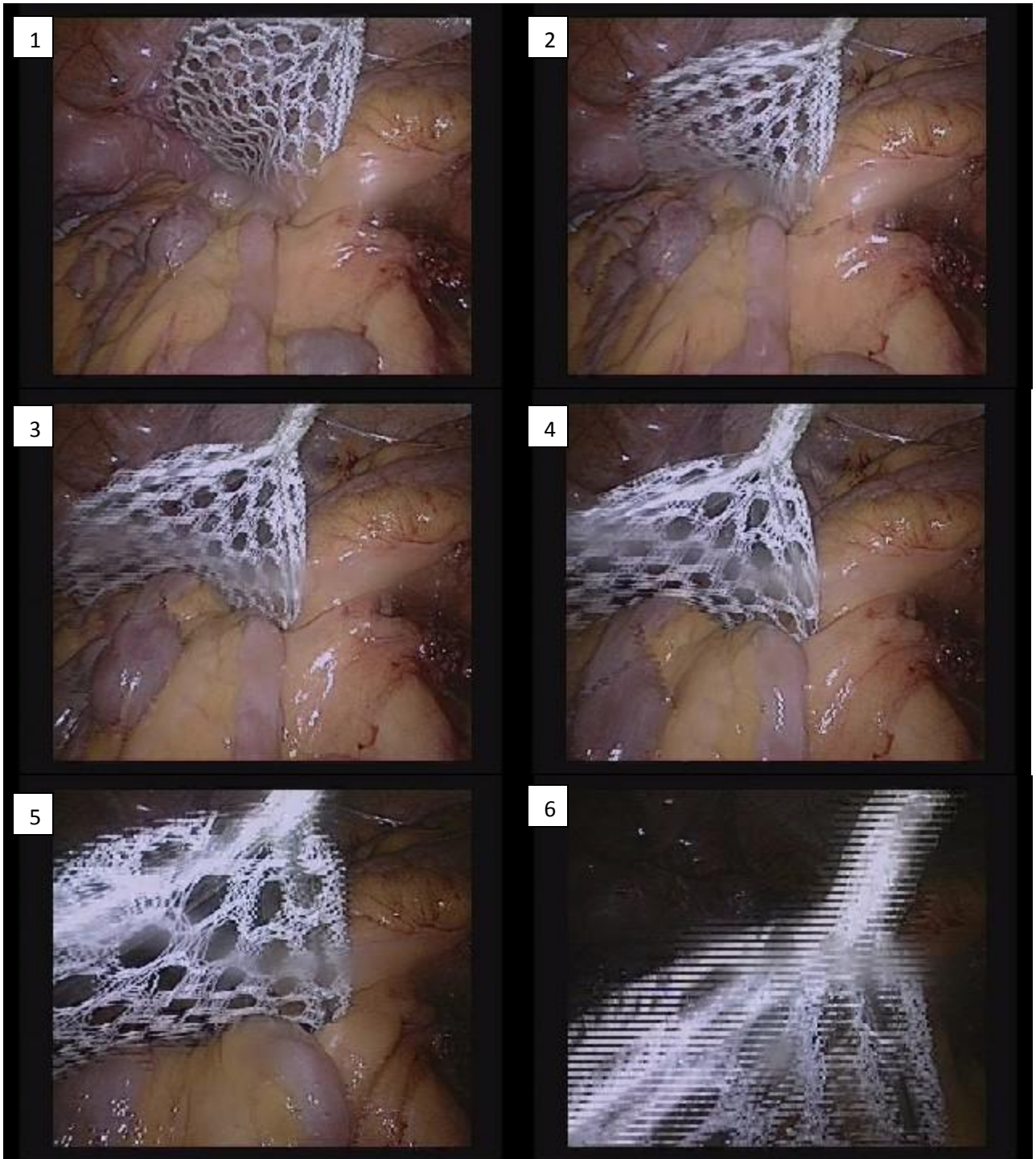


Fig 6: Photos 1-6 demonstrating the steps of small bowel retraction with A-Lap

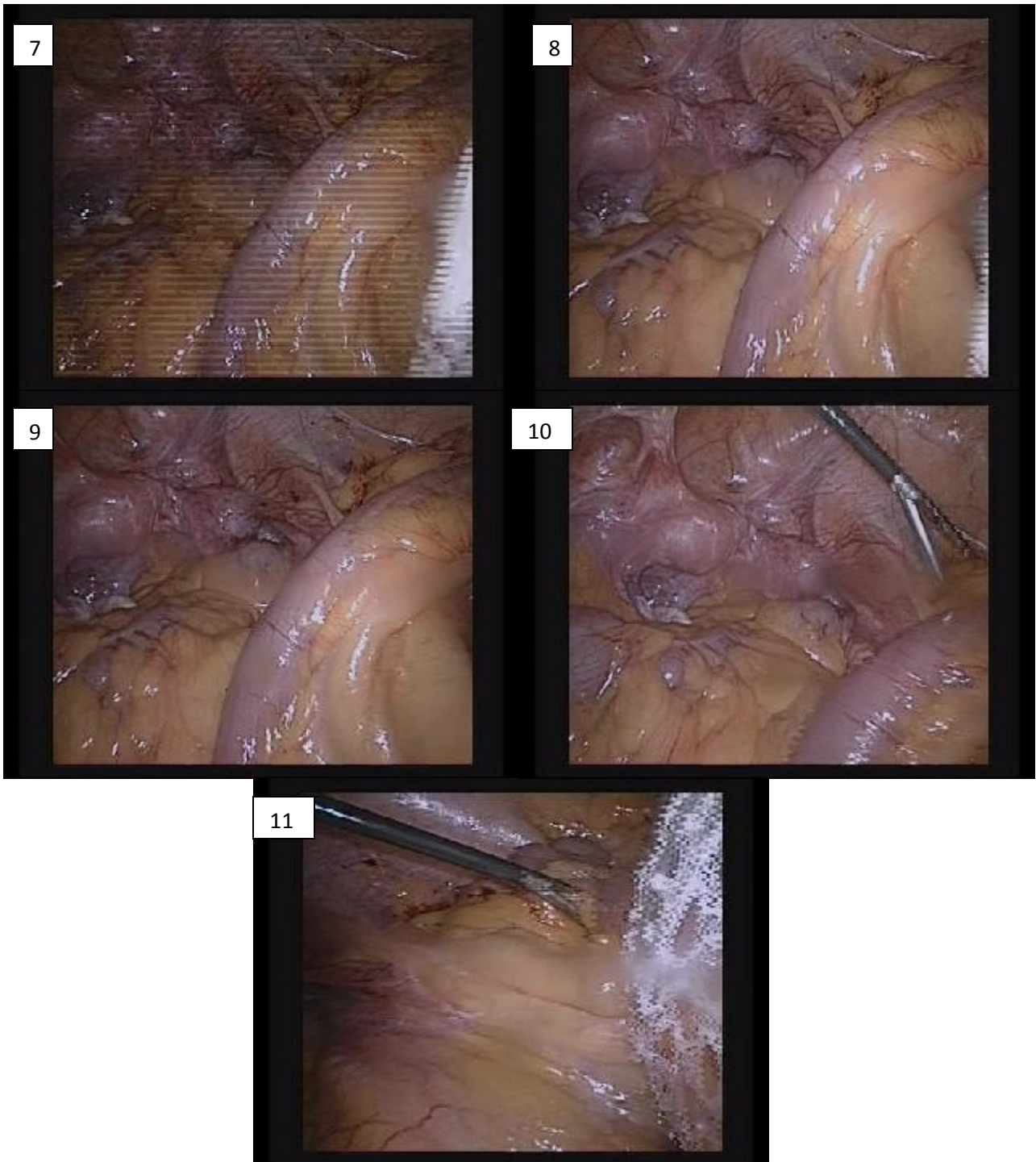


Fig 6: Photos 7-11 demonstrating the surgical window created by small bowel retraction with A-Lap, and working tools within surgical window

Flexible Port



A-Lap Handle

Fig 7: A-Lap during Laparoscopic Lt. Hemicolectomy

A-Lap insertion into the Flexible Port is demonstrated in figure 8:



Fig 8: A-Lap and EZAccess Flexible Port