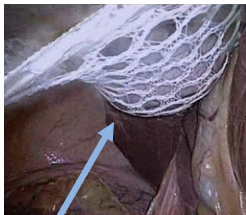


A-Lap™ Soft & Flexible “Hand-Like” Laparoscopic Retractor

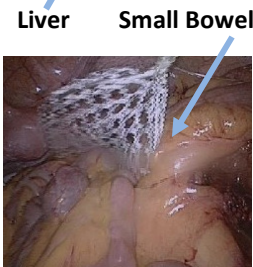
Step 1:

Left Hand Holds Shaft under handle



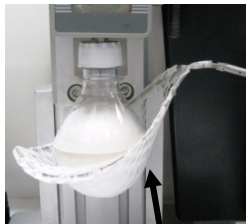
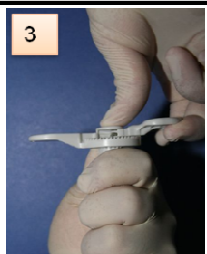
Step 2:

Right **Thumb** Placed on **Central Hinge**



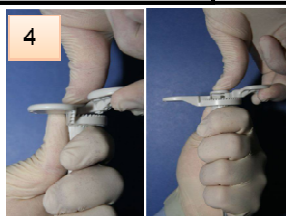
Step 3:

Right Hand Fingers Lift Handle Vertically

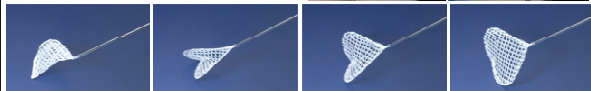


Step 4:

Rotate Handle to “Open” Position



Hand-Like
3-Dimensional
Soft & Flexible
Retraction



EZsurgical
Innovation is our operating tool

EISNER
Precision Medical Products USA, LLC